

## Manual Gap 120

- Viewable from front
- Locking glass doors
- Front air exhaust into room
- 1 band burner medium

Distribution:

Manufacturer:

THE FLAME · Rainer Biemann  
Schalserstraße 41 · A-6200 Jenbach  
www.theflame.at · info@theflame.at

THE FLAME 04-2018

## General Information

- The Gap 120 is suited for wall and floor mounting. Please ensure that the ground is stable, non-yielding, and level, and attach the device solidly to the ground.
- Wall mounting is only permissible if the wall is strong enough to carry the load. If sufficient load-bearing capacity cannot be ensured, appropriate measures must be taken.
- The total weight of the Gap 120 is approx. 80 kg.
- The Gap 120 is a decorative fireplace for indoor use. Not suitable for continuous operation.
- As per installation instructions, minimum distances to flammable construction materials and objects must be maintained at all times.
- Please follow the indicated instruction guide and manual as well as the safety recommendations and warning notices!
- Please ensure that enclosed parts are installed correctly.
- National and regional regulations for the installation of this device must be observed.
- Only install the device in an area that is protected against cross ventilation.

- Minimum room volume Gap 120,  
Air exhaust into room:



Minimum room volume m <sup>3</sup>	Air circulation* n/h	Note
82 m <sup>3</sup>	0.5	Usual air circulation rate of airtight buildings with average aeration habits of users.
41 m <sup>3</sup>	1.0	Complete air exchange inside installation room within one hour.

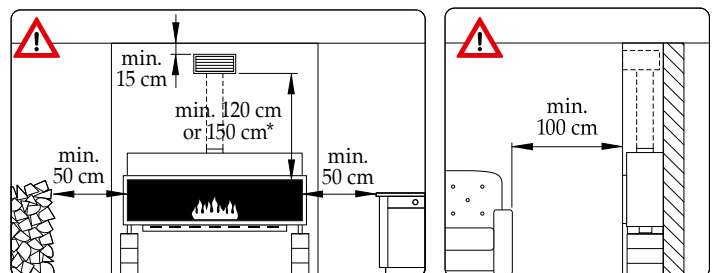
- \*Approximate Values:
- Tilted window, no shutters: Air circulation 0.3 ... 1.5
  - Half opened window: Air circulation 5 ... 10

- Your Gap 120 fireplace has to be examined for obvious defects before every use (burner, safety shaft).
- Appropriate aeration levels must be maintained during operation.
- Simultaneous use of multiple devices is only permissible if the fuel throughput of all devices combined does not exceed 0.5 l/h.
- The safety shaft has to be routinely examined for burn residue and, if necessary, emptied.
- Only operate the device under supervision.

## Installation Instructions

### General Installation Instructions

- Choose an appropriate, fireproof, and non-yielding surface (no wooden walls, particle/chip board, wallpaper, etc.).
- Install the Gap 120 carefully and wear gloves (risk of injury).
- Install the device with a minimum distance of 50 cm to flammable construction parts at the sides, and 15 cm to flammable construction parts at the top (distance measured from top edge of exhaust unit). The Gap 120 can be installed with the backside flush to a wall. A minimum clearance of 100 cm at the front has to be ensured. The distances given above refer to an un-encased device.



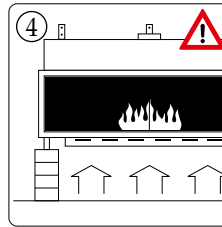
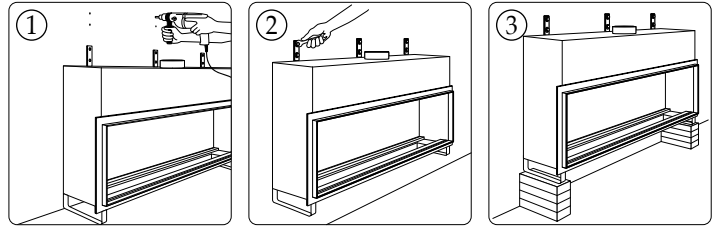
\* GAP 3 sides visible (long - short - long)

- If the Gap 120 is encased with a non-flammable, heat-resistant material (e.g. Fermacell or similar, min. thickness of 1 cm), a second, decorative layer can be added on top (e.g. wood, glass, stone, etc.).

- Please obtain the necessary fastening devices (screws, metal anchors, etc.) for wall mounting the Gap 120 to the respective surface from specialized retail stores.

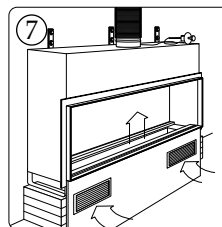
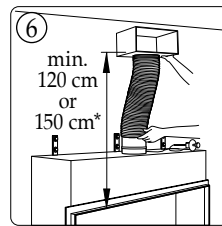
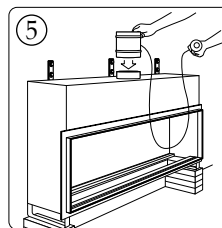
## Assembly

- ① Drill the necessary holes for mounting the Gap 120.
- ② Only use steel anchors and screws of an appropriate size for mounting.
- ③ If necessary, add additional reinforcements at the bottom sides.
- ④ The air routing underneath the fire chamber must not be obstructed!

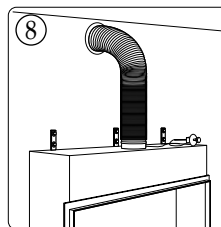


## Preparing the exhaust unit

- ⑤ Insert the manual exhaust air flap into the designated exhaust air socket.
- ⑥ Connect the manual exhaust air flap with the exhaust chamber. At a later point, the exhaust chamber can be attached at the desired position, keeping a min. distance of 120 cm (\* GAP 3 sides visible - long - short - long) above the top edge of the fire chamber. This creates a chimney effect that ensures the desired look of the flames.
- ⑦ The Gap 120 receives its air supply through openings in the floor of the fire chamber. The necessary air supply grilles for the encasement are available as accessories (minimum necessary air supply is 400 cm<sup>2</sup>).
- ⑧ The Gap 120 can also be attached to a flue or directly to the outside area. If air for the Gap 120 is supplied from the outside, an additional cable pull flap is necessary in order to regulate the air supply.



- If the Gap 120 is used with one "Band burner medium (BAND-10)" and the exhaust air is front led into the room, the following accessories are necessary:
  - 1 "Input and Output air grille large (LUFG-GW)" with an open cross section of 430 cm<sup>2</sup> or
  - 2 "Input and Output air grille small (LUFG-KW)" with an open cross section of 275 cm<sup>2</sup> each.
  - "Output air box large (ALKS-GR)".
  - "Exhaust Pipe (ALRO-01)" available in one meter increments, as necessary.

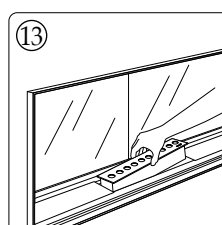
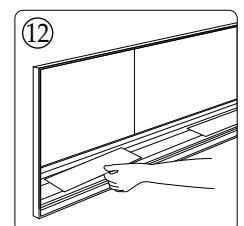
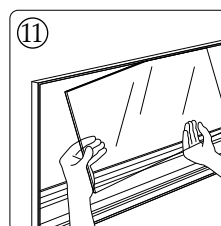
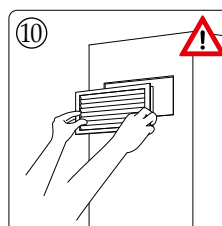



## Preparation of the Fire Chamber

- ⑨ Only use heat resistant material to encase the Gap 120 (e.g. fire resistant boards); allow for a minimum expansion gap of 5 mm to hot steel parts. The flap control can be positioned as desired; however, the cable pull should be kept at a sufficient distance.
- ⑩ Additional rear-ventilation is necessary for the hollow space caused by added brickwork. Air grilles are available as accessories.
- ⑪ Optional: Slide the back wall glass panes into the appropriate slot.
- ⑫ Place the included cover plates on the left and right side of the burn shaft.
- ⑬ Place the included band burner inside the burn shaft. Optional: The Gap 120 can also be operated with two band burners. This is done by using two items of the "Band burner small (BAND-05)" and the appropriate reduction plate (GAPRB-120).

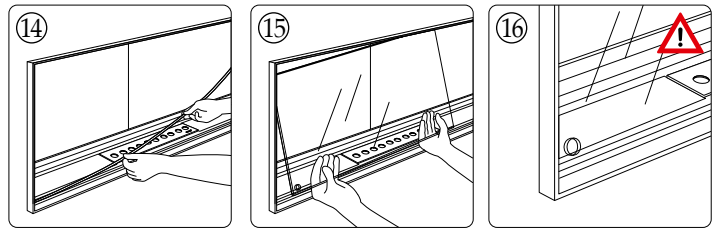


- The following accessories are necessary to rear-ventilate the encasement of the installed Gap 120:
  - 1 or 2 "Air grille small (LUFG-KW)" with an open cross section of 275 cm<sup>2</sup> each.



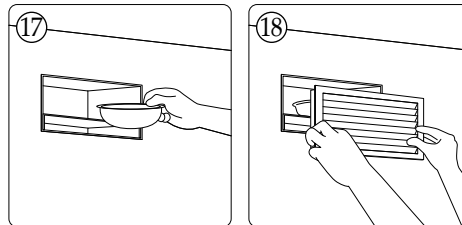
 Please follow the indicated safety recommendations and warning notices!

- ⑭ Slide the included ball rails in the appropriate slots in the front area of the fire chamber (open side facing downwards, approx. 2/3 of length).
- ⑮ The sliding glass panes are entered with the glass socket facing downwards into the ball rails. Start with the inside pane, then do the outside pane. Optional: With double glazed units, attach first the two inside sliding panes, and then the two outside sliding panes.
- ⑯ If the sliding panes of your Gap 120 are equipped with optional opening holes, ensure that these are on the outside of the Gap 120.



## Output air box with aroma compartment

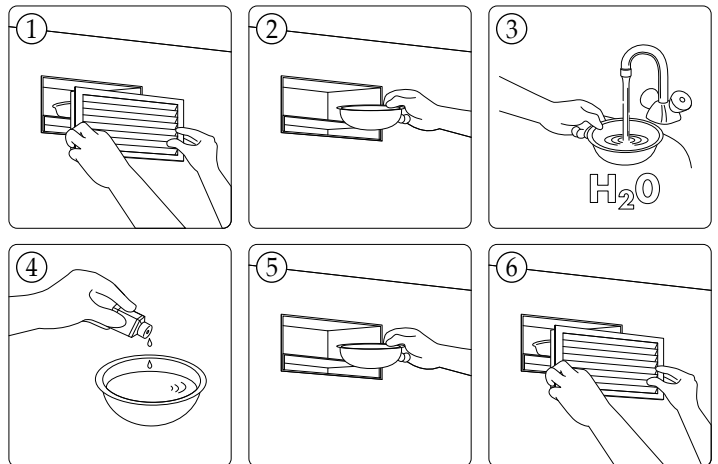
- ⑰ Place the perforated plate holder with the aroma tray in the Output air box.
- ⑱ Afterwards, the output air box containing the aroma tray is closed with an exhaust grille.



# Manual

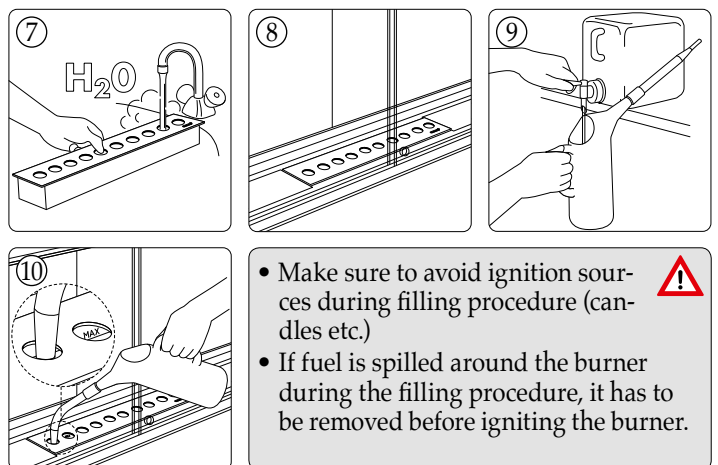
## Filling the aroma compartment

- ① Remove the exhaust grille.
- ② Take out the aroma tray.
- ③ Fill the aroma tray with hot water.
- ④ Add your preferred aroma agent by THE FLAME to the water.
- ⑤ Put the aroma tray back into the aroma compartment.
- ⑥ Put back the exhaust grille.



## Filling the Burner

- ⑦ Before using the band burner for the first time, rins with hot water. This is done in order to clean and preheat the burner.
- ⑧ Afterwards, place the burner in the appropriate position in the burn shaft.
- ⑨ Taking into account the desired burn period, fill the filling container with the required amount of "Bio-Fuel - Indoor" (consumption rate is approx. 250 ml/h).
  - The maximum capacity of the „Band burner medium“ is: 1.5 liters.
  - The fuel canister has to be stored upright - only tilt it when filling the filling container.
- ⑩ Fill the burner at room temperature. Never fill the band burner beyond the "MAX" marking (= maximum permissible fill level)!
  - If the desired burn period is a max. length of 4 hours (usually for residential purposes), the use of "Band burner small (BAND-05)" is recommended, since it provides easier ignition and shorter heat up time.



• Make sure to avoid ignition sources during filling procedure (candles etc.)

• If fuel is spilled around the burner during the filling procedure, it has to be removed before igniting the burner.

• In addition, always check before each ignition whether there is any spilled fuel inside or outside the safety container. If this is the case, the spilled fuel must be removed before ignition.

• The ethanol fireplace must be examined for obvious defects before every use (burner, safety shaft).

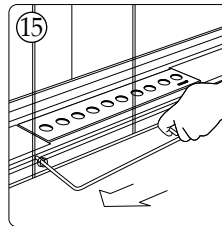
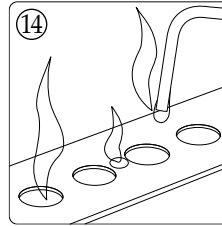
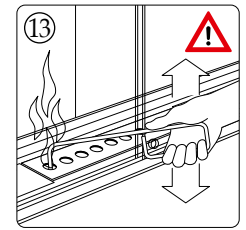
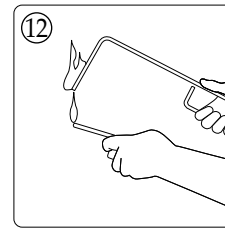
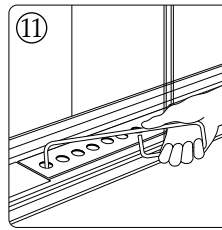
• Always aerate the installation room.


• **Maximum capacity:**  
 Band burner small (BAND-05): 1 liter  
 Band burner medium (BAND-10): 1.5 litres

Please follow the indicated safety recommendations and warning notices!

## Igniting the Burner

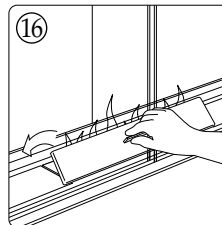
- ⑪ Dip the ignition hook into the fuel.
- ⑫ Take it out and ignite the wet hook.
- ⑬ Dip the burning hook into the first hole of the burner, light the fuel, and take out the hook. When lighting the burner, position yourself behind the front glass panes.
- ⑭ Shake off the burning drop of fuel on the tip of the ignition hook on the surface of the burner (dividing bar). Enter it into the second hole, and shake it off again on the dividing bar. Repeat this process twice with all burner openings, going from left to right. Through this procedure, the steel casing of the burner is warmed up and the fuel reaches the necessary temperature (min. of 26 °C) faster. Repeat this process with the second band burner.
- ⑮ Immediately after ignition, the Gap 120 has to be closed off by shutting the protective glass panes. If the sliding doors of your Gap 120 are equipped with optional opening holes, you can use the ignition hook for closing off the device.




- Always fill the burner only with the amount of “Bio-Fuel - Indoor” required for the desired burn period (consumption rate is approx. 250 ml/h)! 
- Initially, the flame will be small and have a bluish tint.
- After a period of approx. 10 min., the fire will reach its beautiful, calming look.
- If possible, always let the band burner burn until the fuel is exhausted!
- Always ensure sufficient aeration!
- Please follow the indicated safety recommendations and warning notices!

## Extinguishing the Burner

- ⑯ Use the extinguishing lid to extinguish the burner. Positioning yourself at the front, angle the extinguishing lid slightly and place it on the burner.
  - Generally, the burner should be left burning until the fuel supply is exhausted.
  - Only remove the extinguishing lid after it has cooled down (risk of burn injuries).



- The cross section of the exhaust pipe may not be altered. 
- The exhaust has to be unobstructed; if no air distribution chamber has been installed, it cannot lead, for example, to a long slot style opening in the wall.
- During operation, the exhaust flap must always stay open (risk of overheating)!
- Always let the burner cool down before touching or refilling it.
- Please wait a minimum of 35 minutes after the flame is extinguished before refilling the burner.
- When not in use, the burner of your Gap have to be closed with extinguishing lids.
- Never fill the burner with other flammable materials!
- Please follow the indicated safety recommendations and warning notices!


















## Maintenance and Cleaning

- Occasionally, the inside of the burner should be rinsed and the outside wiped in order to remove any burn residue.
- Clean the burner after every 20 hours of operation. This is done by filling the burner with a small amount of fuel (approx. 1/8 liter) and carefully swiveling it until the residue is dissolved. Now fill the burner with hot water and discard the diluted mixture.
- The aroma compartment should be cleaned and refilled every time before the device is operated.
- The device should only be cleaned with a damp, soft cloth, without using scouring agents or aggressive cleaning products.
- The safety shaft has to be routinely examined for burn residue and, if necessary, emptied.












Please follow the indicated safety recommendations and warning notices!

# Safety Recommendations and Warning Notices Gap 120

<ul style="list-style-type: none"> <li>• This device may not be operated by children and handicapped people without supervision.</li> </ul>		<ul style="list-style-type: none"> <li>• Ignition sources absolutely must be avoided during filling procedure.</li> </ul>		<ul style="list-style-type: none"> <li>• During extended periods of operation, single-paned fire chambers present a risk of burns.</li> </ul>	
<ul style="list-style-type: none"> <li>• Keep small children away from the device.</li> </ul>		<ul style="list-style-type: none"> <li>• If during the filling process any fuel is spilled around the burner, ignition must be avoided. First, dry up and remove spilled fuel from all cracks and hollow spaces and aerate.</li> </ul>		<ul style="list-style-type: none"> <li>• Touching hot metal parts can cause burns. Be careful when handling the device while it is hot or still operating.</li> </ul>	
<ul style="list-style-type: none"> <li>• The construction of the device may not be altered.</li> </ul>		<ul style="list-style-type: none"> <li>• The device must not be filled during operation and while still warm. Please follow the instructions on the device and the burner. Temperature has to be below 24° C!</li> </ul>		<ul style="list-style-type: none"> <li>• Not suitable for heating or continuous operation.</li> </ul>	
<ul style="list-style-type: none"> <li>• Only spare parts that are approved by the manufacturer may be installed.</li> </ul>		<ul style="list-style-type: none"> <li>• Air grilles must not be covered or closed.</li> </ul>		<ul style="list-style-type: none"> <li>• Never cover the device or burner.</li> </ul>	
<ul style="list-style-type: none"> <li>• The instruction manual should be carefully read before operating the device.</li> </ul>		<ul style="list-style-type: none"> <li>• Never place flammable objects in or on the device or burner.</li> </ul>		<ul style="list-style-type: none"> <li>• Only operate in aerated rooms.</li> </ul>	
<ul style="list-style-type: none"> <li>• Never fill the burner with more than 1.5 liters of "Bio-Fuel - Indoor." Only use the filling container for filling the burner! Never use the canister for filling!</li> </ul>				<ul style="list-style-type: none"> <li>• Extinguishing: Closing the slide plate</li> <li>• Emergency Extinguishing Procedure: Use the filling container to fill the burner with water - do not overfill!!! A fire blanket and a suitable fire extinguisher are recommended.</li> </ul>	
<ul style="list-style-type: none"> <li>• Only use recommended fuel.</li> </ul>					

# Safety Recommendations and Warning Notices Bio-Fuel

P102 Must be kept out of the reach of children.		H225 The liquid and vapors ignite easily.		<ul style="list-style-type: none"> <li>• Not suitable for consumption.</li> <li>• Only ignite and burn in the provided burner.</li> <li>• Only ignite with provided ignition hook.</li> </ul>
P233 Keep container tightly closed.		H302 Harmful if swallowed.		
P210 Keep away from heat, sparks, open flames, and hot surfaces. Do not smoke.	 	H332 Harmful if inhaled.		
P243 Take precautions against electrostatic charge.		H412 Harmful to aquatic organisms, with long-term effects.		
			 CAS: 64-17-5 · UN 1170 Hazard Label 3	