



Manual Bit 1S/2S/3S/4S

Distribution:

Manufacturer:

THE FLAME · Rainer Biemann
Schalserstraße 41 · A-6200 Jenbach
www.theflame.at · info@theflame.at

THE FLAME 04-2014

General Information

- When setting up the Bit, please ensure that the ground is level and stable.
- The total weight of the Bit is approx. 50 kg.
- The Bit is a decorative fireplace for indoor use. Not suitable for continuous operation.
- As per installation instructions, minimum distances to flammable construction materials and objects must be maintained at all times.
- Please follow the indicated instruction guide and manual as well as the safety recommendations and warning notices!
- Please ensure that enclosed parts are installed correctly.
- National and regional regulations for the installation of this device must be observed.
- Only install the device in an area that is protected against cross ventilation.
- Simultaneous use of multiple devices is only permissible if the fuel throughput of all devices combined does not exceed 0.5 l/h.

• Minimum room volume Bit:

Minimum room volume m ³	Air circulation* n/h	Note
163 m ³	0,5	Usual air circulation rate of airtight buildings with average aeration habits of users.
81 m ³	1,0	Complete air exchange inside installation room within one hour.

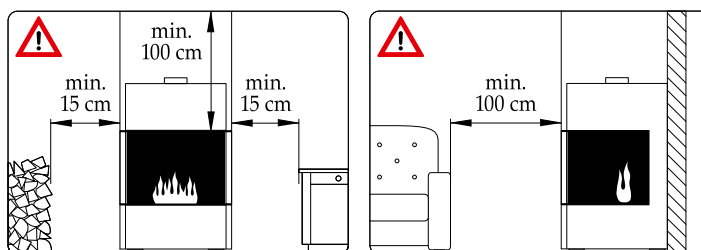
*Approximate Values: • Tilted window, no shutters: Air circulation 0,3 ... 1,5
• Half opened window: Air circulation 5 ... 10

- Your Bit fireplace has to be examined for obvious defects before every use (burner, safety shaft).
- Appropriate aeration levels must be maintained during operation.
- The safety shaft has to be routinely examined for burn residue and, if necessary, emptied.
- Only operate the device under supervision.

Installation Instructions

General Installation Instructions

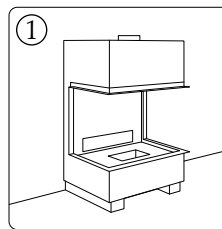
- Choose an appropriate, fireproof, and non-yielding surface (no wooden walls, particle/chip board, wallpaper, etc.).
- Install the Bit carefully and wear gloves (risk of injury).
- Install the device with a minimum distance of 15 cm to flammable construction parts at the sides, and 100 cm to flammable construction parts at the top (distance from top edge of the fire chamber). The Bit can be installed with the backside flush to a wall. A minimum clearance of 100 cm at the front has to be ensured. The distances given above refer to an un-encased device.
- If the Bit is encased with a non-flammable, heat-resistant material (e.g. Fermacell or similar, min. thickness of 1 cm), a second, decorative layer can be added on top (e.g. wood, glass, stone, etc.).
- Please obtain the necessary fastening devices (screws, metal anchors, etc.) for wall mounting the Bit to the respective surface from specialized retail stores.



Please follow the indicated safety recommendations and warning notices!

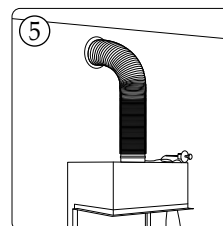
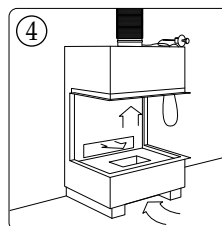
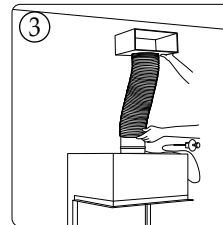
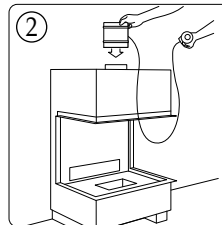
Assembly

- ① Position the Bit on a solid brick support structure. Please ensure that the air routing underneath the fire chamber is not obstructed in any way.
When installing the model Bit 4S, the upper part is fastened to the ceiling.



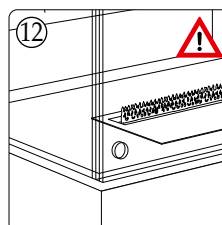
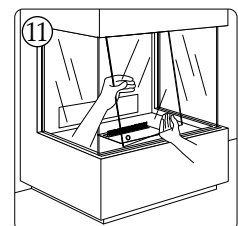
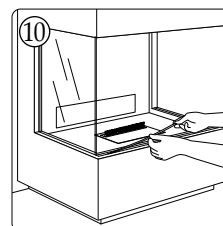
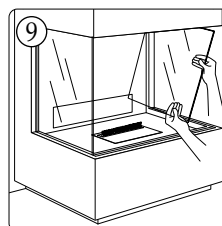
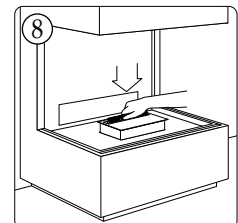
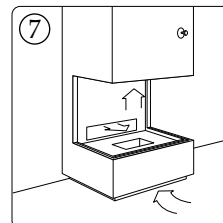
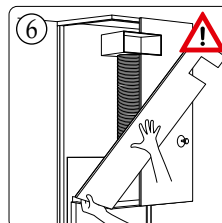
Preparing the exhaust unit

- ② Insert the manual exhaust air flap into the designated exhaust air socket.
- ③ Connect the manual exhaust air flap with the exhaust chamber. At a later point, the exhaust chamber can be attached at the desired position, keeping a min. distance of 50 cm above the top edge of the fire chamber. This creates a chimney effect that ensures the desired look of the flames.
- ④ The Bit receives its air supply through openings in the floor of the fire chamber (minimum necessary air supply is 400 cm²).
- ⑤ The Bit can also be attached to a flue or directly to the outside area. If air for the Bit is supplied from the outside, an additional cable pull flap is necessary in order to regulate the air supply.



Preparation of the Fire Chamber

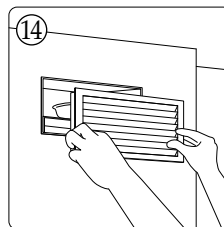
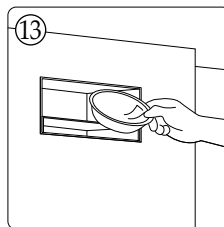
- ⑥ Only use heat resistant material to encase the Bit (e.g. fire resistant boards); allow for a minimum expansion gap of 5 mm to hot steel parts. The flap control can be positioned as desired; however, the cable pull should be kept at a sufficient distance.
Additional rear-ventilation is necessary for the hollow space caused by added brickwork. Air grilles are available as accessories.
- ⑦ The base can be encased as long as sufficient air supply can be ensured (at least 400 cm²).
- ⑧ Place the included burner inside the burn shaft (burn slot facing backward).
- ⑨ Slide the glass panes at the sides into the appropriate slot.
- ⑩ Slide the included ball rails in the appropriate slots in the front area of the fire chamber (open side facing downwards, approx. 2/3 of length).
- ⑪ The sliding glass panes are entered with the glass socket facing downwards into the ball rails. Start with the inside pane, then do the outside pane. Optional: With double glazed units, attach first the two inside sliding panes, and then the two outside sliding panes.
- ⑫ If the sliding panes of your Bit are equipped with optional opening holes, ensure that these are on the outside of the Bit.



Please follow the indicated safety recommendations and warning notices!

Output air box with aroma compartment

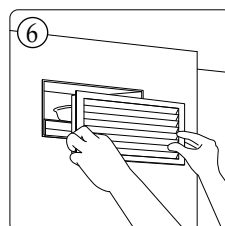
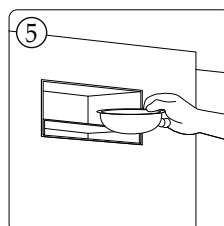
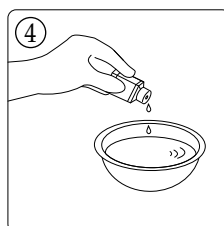
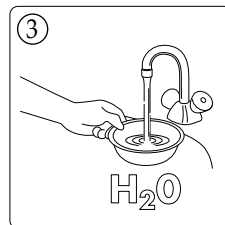
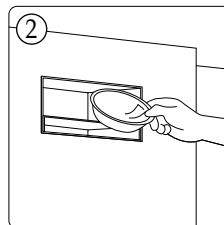
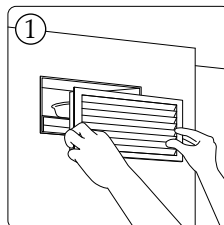
- ⑬ Place the perforated plate holder with the aroma tray in the Output air box.
- ⑭ Afterwards, the output air box containing the aroma tray is closed with an exhaust grille.



Manual Bit 1S/2S/3S/4S

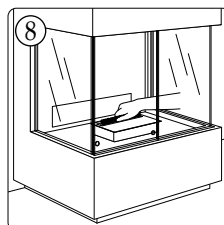
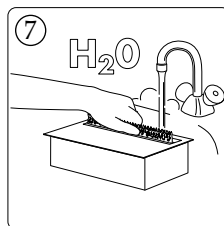
Filling the aroma compartment


- ① Remove the exhaust grille.
- ② Take out the aroma tray.
- ③ Fill the aroma tray with hot water.
- ④ Add your preferred aroma agent by THE FLAME to the water.
- ⑤ Put the aroma tray back into the aroma compartment.
- ⑥ Put back the exhaust grille.

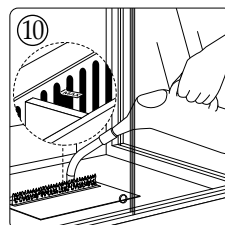
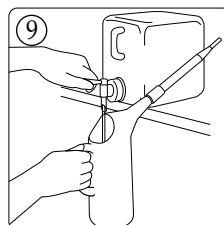



Filling the Burner

- ⑦ Before using the burner for the first time, rinse it with hot water. This is done in order to clean and preheat the burner.
- ⑧ Afterwards, put the burner back into the burner shaft.
- ⑨ Taking into account the desired burn period, fill the filling container with the required amount of "Bio-Fuel - Indoor" (consumption rate is approx. 500 ml/h).
 - The maximum fill capacity of the burner is 3 liters.
 - The fuel canister has to be stored upright - only tilt it when filling the filling container.
- ⑩ Fill the burner at room temperature. Never fill the burner beyond the "MAX" marking (= maximum permissible fill level)!



Always fill the burner only with the amount of "Bio-Fuel - Indoor" required for the desired burn period (consumption rate is approx. 500 ml/h)! Please follow the indicated safety recommendations and warning notices! 



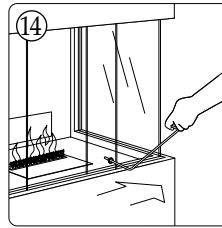
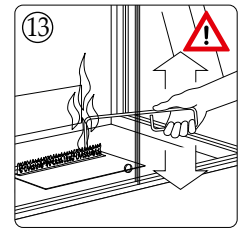
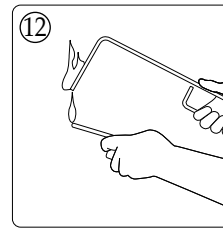
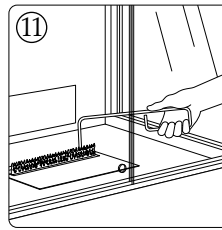
- Make sure to avoid ignition sources during filling procedure (candles etc.) 
- If fuel is spilled around the burner during the filling procedure, it has to be removed before igniting the burner.
- In addition, always check before each ignition whether there is any spilled fuel inside or outside the safety container. If this is the case, the spilled fuel must be removed before ignition.
- The ethanol fireplace must be examined for obvious defects before every use (burner, safety shaft).
- Always aerate the installation room.



Please follow the indicated safety recommendations and warning notices!

Igniting the Burner

- ⑪ Dip the ignition hook into the fuel.
- ⑫ Take it out and ignite the wet hook.
- ⑬ Dip the burning hook into the fuel to ignite it. Depending on the temperature, the fire might extinguish and the hook may need to be dipped into the fuel a number of times (up to 1 minute) in order to re-ignite the fire. When lighting the burner, position yourself behind the front glass panes.
- ⑭ Immediately after ignition, the Bit has to be closed off by shutting the protective glass panes. If the sliding doors of your Bit are equipped with optional opening holes, you can use the ignition hook for closing off the device.

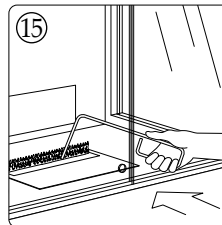


Initially, the flame will be small and have a bluish tint. After a period of approx. 10 min., the fire will reach its beautiful, calming look. If possible, always let the fire burn until the fuel is exhausted! Always ensure sufficient aeration!

The cross section of the exhaust pipe may not be altered. During operation, the exhaust flap must always stay open (risk of overheating)! Please follow the indicated safety recommendations and warning notices!

Extinguishing the Burner

- ⑮ The burner can be extinguished by closing the slide plate with the ignition hook.
 - Generally, the burner should be left burning until the fuel supply is extinguished.



- Always let the burner cool down before touching or refilling it.
- Please wait a minimum of 30 minutes after the flame is extinguished before refilling the burner.
- When not in use, the burner of your Bit have to be closed with extinguishing lids.
- Never fill the burner with other flammable materials!
- Please follow the indicated safety recommendations and warning notices!

Maintenance and Cleaning

- Occasionally, the inside of the burner should be rinsed and the outside wiped in order to remove any burn residue.
- Clean the burner after every 20 hours of operation. This is done by filling the burner with a small amount of fuel (approx. 1/8 liter) and carefully swiveling it until the residue is dissolved. Now fill the burner with hot water and discard the diluted mixture.
- The aroma compartment should be cleaned and refilled every time before the device is operated.
- The device should only be cleaned with a damp, soft cloth, without using scouring agents or aggressive cleaning products.
- The safety shaft has to be routinely examined for burn residue and, if necessary, emptied.












Please follow the indicated safety recommendations and warning notices!

Safety Recommendations and Warning Notices Bit

<ul style="list-style-type: none"> • This device may not be operated by children and handicapped people without supervision. 		<ul style="list-style-type: none"> • Ignition sources absolutely must be avoided during filling procedure. 		<ul style="list-style-type: none"> • During extended periods of operation, single-paned fire chambers present a risk of burns. 	
<ul style="list-style-type: none"> • Keep small children away from the device. 		<ul style="list-style-type: none"> • If during the filling process any fuel is spilled around the burner, ignition must be avoided. First, dry up and remove spilled fuel from all cracks and hollow spaces and aerate. 		<ul style="list-style-type: none"> • Touching hot metal parts can cause burns. Be careful when handling the device while it is hot or still operating. 	
<ul style="list-style-type: none"> • The construction of the device may not be altered. 		<ul style="list-style-type: none"> • Only spare parts that are approved by the manufacturer may be installed. 		<ul style="list-style-type: none"> • Not suitable for heating or continuous operation. 	
<ul style="list-style-type: none"> • The instruction manual should be carefully read before operating the device. 		<ul style="list-style-type: none"> • The device must not be filled during operation and while still warm. Please follow the instructions on the device and the burner. Temperature has to be below 24° C! Only use the filling container for filling the burner! Never use the canister for filling! 	  	<ul style="list-style-type: none"> • Never cover the device or burner. 	
<ul style="list-style-type: none"> • Never fill the burner with more than 3 liters of "Bio-Fuel - Indoor." Only use the filling container for filling the burner! Never use the canister for filling! 	 	<ul style="list-style-type: none"> • Air grilles must not be covered or closed. 		<ul style="list-style-type: none"> • Only operate in aerated rooms. 	
<ul style="list-style-type: none"> • Only use recommended fuel. 		<ul style="list-style-type: none"> • Never place flammable objects in or on the device or burner. 		<ul style="list-style-type: none"> • Extinguishing: Closing the slide plate • Emergency Extinguishing Procedure: Use the filling container to fill the burner with water - do not overfill!!! A fire blanket and a suitable fire extinguisher are recommended. 	

Safety Recommendations and Warning Notices Bio-Fuel

P102 Must be kept out of the reach of children.		H225 The liquid and vapors ignite easily.		<ul style="list-style-type: none"> • Not suitable for consumption. • Only ignite and burn in the provided burner. • Only ignite with provided ignition hook.
P233 Keep container tightly closed.		H302 Harmful if swallowed.		
P210 Keep away from heat, sparks, open flames, and hot surfaces. Do not smoke.	 	H332 Harmful if inhaled.		
P243 Take precautions against electrostatic charge.		H412 Harmful to aquatic organisms, with long-term effects.		<div>  <p>CAS: 64-17-5 · UN 1170 Hazard Label 3</p> </div>



Please follow the indicated safety recommendations and warning notices!