

# Operating and Assembly Instructions Effect Fire Hip 30/50

Distribution:

Manufacturer:

THE FLAME GmbH  
Schalserstraße 41 · A-6200 Jenbach  
[www.theflame.at](http://www.theflame.at) · [info@theflame.at](mailto:info@theflame.at)

THE FLAME 05-2023

## Content

Informationen:	• Safety	2
	• General	2
	• Electrical connection	2
	• Operation and maintenance	2
	• Delivery package	3
Assembly instruction:	• Preparation	3
	• Setting up the Effect Burner Wood Large	4
	• Installation of the Hip Front built-in module	4
	• Hip Tunnel built-in module	6
Operating Instruction:	• Operating manually	7
	• Start using the remote control	8
	• Regulation of the flame intensity	9
	• Switching off the Fire Effect	9
Cleaning:	• Cleaning	10
	• Cleaning with Fluidmatic operation	12
	• Maintenance and cleaning	15
Danger and Warning Symbols:		15



Please pay close attention to the notes!

# Information - Safety

- Please keep these instructions in a safe place for future reference. When using electrical equipment basic precautions should always be taken in order to avoid the risk of fire, electric shock and other injury to persons. Such precautions should include the following measures:
- If the unit is damaged, consult the dealer before installation and use.
- Do not use the unit outdoors, or in the direct vicinity of a bath or swimming pool.
- Since there is water in the burner, it is not suitable for outdoor operation in the cold winter, as the water freezes at 0 °C or less.
- All electric effect fires must be covered with our textile or steel cover when used outdoors (protection from rain or dust).
- The unit must not be positioned directly below a fixed electrical socket or connection box.
- The unit is not suitable for children or persons without the assistance or supervision of a third person, in the situation in which the safe use of the unit is not possible due to a physical or mental condition or due to reduced perception.
- Children must be supervised, to ensure that they do not play with the unit.
- In the event of a fault, pull out the mains plug of the unit.
- If covered during operation, there is a risk of fire.
- In case of error or prolonged non-use, please unplug the device.
- The unit must be positioned, such that the mains plug is accessible.
- If the mains plug becomes damaged, it must be replaced by the manufacturer or by a customer service centre or a comparably qualified person, in order to exclude sources of danger.
- Under no circumstances must the unit be operated if the lamps are not functioning.
- The lamps are to be examined regularly. In order to avoid overheating, the unit must not be covered. This is indicated on the unit by a warning symbol. Do not lay any objects or articles of clothing on the unit and do not obstruct the circulation of air around the unit.
- Restricted life of lighting equipment, ultrasonic membranes, fans and Effect Burners - up to approx. 3,000 hours.
- Before cleaning the fire Effect Burners the mains plug should always be pulled out.  
We recommend regular cleaning every 100 hours or at least every two weeks at the latest (obvious contamination should be removed immediately).
- Remove all water from the sump and tank if the device is not used for more than 10 days.
- Outdoor operation is only permitted if the temperatures are above 12 °C - 24/7, the burners are installed in a housing and protected from rain.



## Information - General

- Carefully unpack the unit and store the packaging for later use, e.g. for relocation, for returning the unit to the dealer or service return.
- The remote control and the batteries are packed separately in the carton.
- The unit is equipped with a fire effect without heating function.
- The fire effect consumes very little electrical energy (e.g. Effect burner Medium approx. 250 W, Large approx. 400 W).
- This unit is intended for installation in a border, or in an installation opening in a wall.
- The operating noise can be heard under certain circumstances, due to the fire effect. This is normal and is no reason for complaint.



## Information - Electrical connection

### **WARNING - THIS UNIT MUST BE EARTHED.**

- This unit must only be connected to an alternating current power supply (AC supply).
- The voltage stated on the unit must be the same as the actual available supply voltage.
- Read the safety instructions and operating instruction carefully before switching on the unit.



## Information - Operation and maintenance

- Use only "BIO-FLUID" from "THE FLAME" or distilled water in this unit.
- Always make sure that the unit is standing on a level surface.
- After installation this unit must not be moved or laid on its back, without first ensuring that the water in the sump and water tank has been emptied.
- Pull out the drawer only when filling the water tank or in the event of replacing a lamp, because otherwise you may accidentally change the water level and the behavior of the fire effect function.
- We inform you that a maximum, continuous operating time (ON) of ten hours must not be exceeded. After ten hours continuous operating time the effect burner has to be switched off for at least two hours (OFF) - after
- Use only "BIO-FLUID" from "THE FLAME" or distilled water in this unit.
- Always make sure that the unit is standing on a level surface.
- After installation this unit must not be moved or laid on its back, without first ensuring that the water in the sump and water tank has been emptied.
- Pull out the drawer only when filling the water tank or in the event of replacing a lamp, because otherwise you may accidentally change the water level and the behavior of the fire effect function.
- We inform you that a maximum, continuous operating time (ON) of ten hours must not be exceeded. After ten hours continuous operating time the effect burner has to be switched off for at least two hours (OFF) - after



Please pay close attention to the notes!

# Delivery package

Depending on the version:

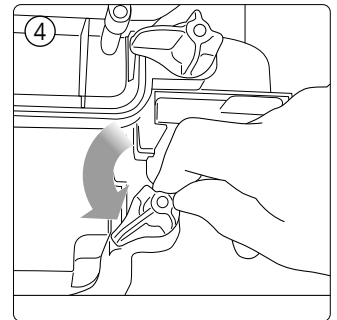
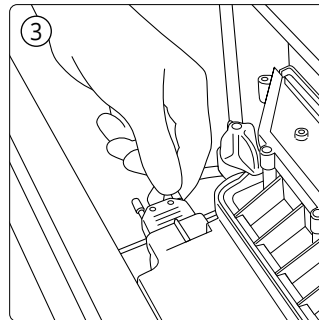
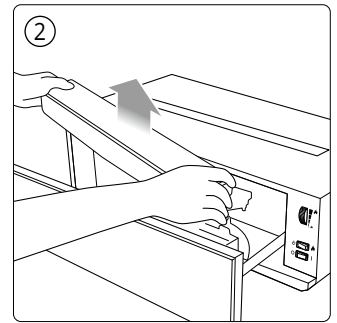
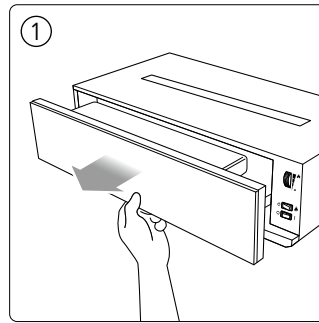
- Effect Burner Hip Medium/Large (Built-in version for optional combustion chamber floor in, for example, stainless steel, stone or glass) or
- Effect Burner - Wood Medium/Large (Stand-alone and built-in version with decor wood and glow effect).
- Connection cable 1.70 m
- 5 / 8 x Halogen lamps
- Remote operation incl. Wall mounting bracket and 2 AAA batteries
- Operating instruction

## Assembly instruction

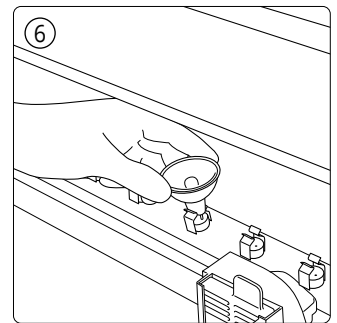
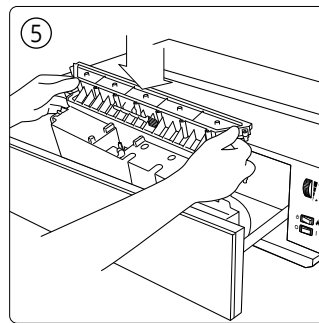
### Preparation

- Please first remove packaging material from all parts (Note sticker with the warning instruction).
- Please store the packaging material for possible later use (e.g. in the event of moving or for returning the unit to the dealer).

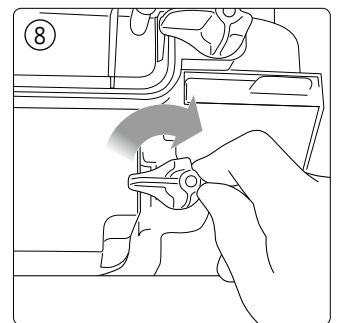
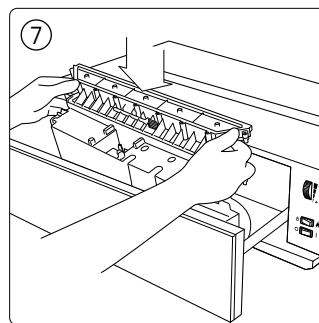
- ① Pull out the drawer of the Effect Burner to the stop, using the handle provided.
- ② Lift up the water tank and remove it from the unit.
- ③ Unscrew the power cable on the left side.
- ④ Release the lower red locking device on both sides.



- ⑤ Now please remove the sump.
- ⑥ Please insert the 8 lamps provided.

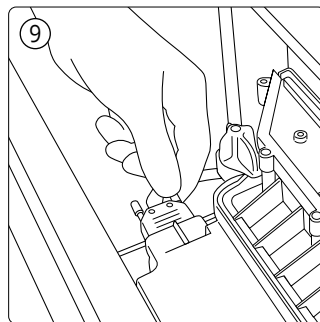


- ⑦ Reinsert the sump.
- ⑧ Lock the tank in position again on both sides.

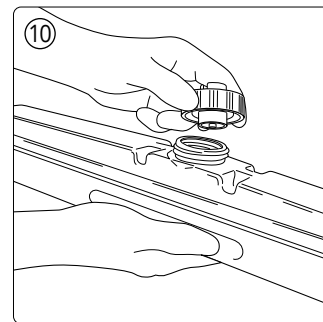


Please pay close attention to the notes!

⑨ Screw the power cable back on the left side.

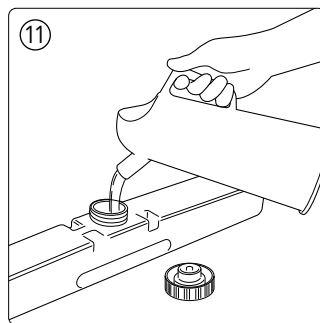


⑩ Unscrew the water tank cap (counter-clockwise). Closing the tank with the screw cap must be done very carefully and with normal, light force. It should be tight, but not closed with extreme force.

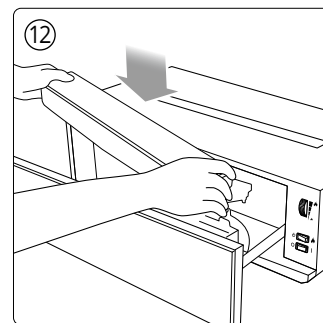


Capping with extreme force will damage the seal in the screw cap and lead to hairline cracks in the tank and screw cap. Hairline cracks and defective seals lead to uncontrolled leakage of water and thus to further damage.

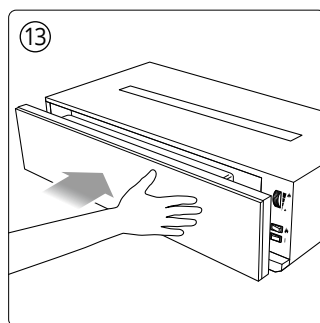
⑪ Now fill the water tank with "BIO-FLUID" (Medium: max. 1,3 l, Large: max. 1,9 l) or distilled water, and screw the water tank cap back on (but do not over-tighten!)



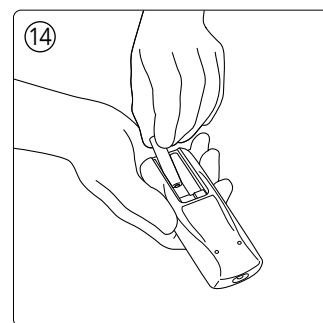
⑫ Reinsert the water tank. The tank cap must point downwards and the flat side of the tank point outwards.



⑬ Gently push the drawer in and up to the stop.



⑭ Open the back of the remote control and insert the batteries. Close the remote control.



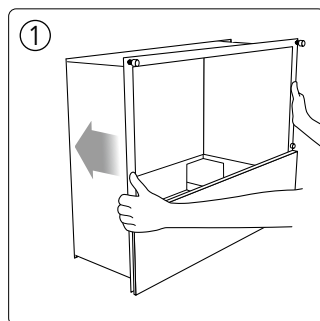
## Setting up the Effect Burner Wood Large

- If you are going to use the Effect Burner Wood Large (Stand-alone and built-in version with decorative wood and glow effect), then position the unit horizontally in the desired position and connect the unit to the power supply.

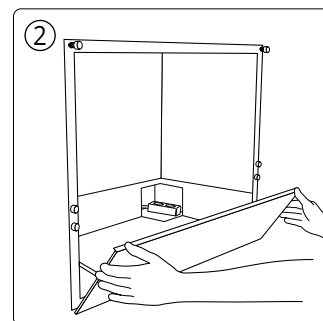
## Installation of the Hip Front built-in module

- If you are going to use the Effect Burner Hip Medium/Large (built-in version for optional combustion chamber floor in, for example, stainless steel, stone or glass) in a Hip Front 30/50 built-in module, then please note the following points:

① Insert the built-in module in the prepared recess and fix it in position (using screws or adhesive). The installation must be accurately aligned in the horizontal plane.

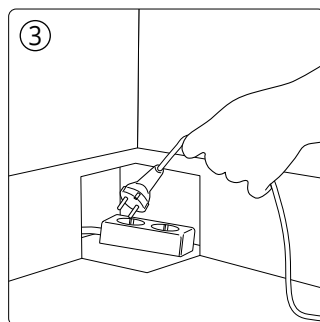


② Open the hinged flap of the Hip Front 30/50 built-in modules.

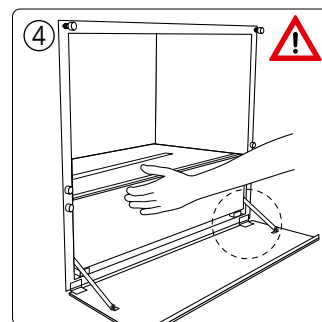


Please pay close attention to the notes!

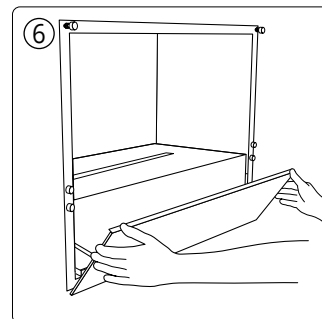
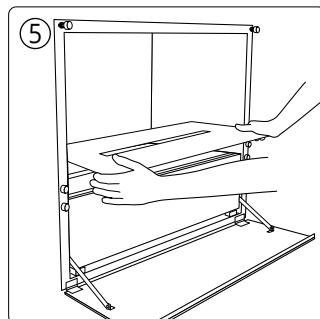
③ Pass the mains plug of the Effect Burner Hip Medium/Large through the left or right opening in the back of the unit, depending on the position of the connection and connect it to the power supply. The connection cable can be extended in-situ, if required (specialist) or directly connected to the mains supply.



④ Insert the Effect Burner Hip Medium/Large in the built-in module. Make sure that the Effect Burner is located behind the stops.

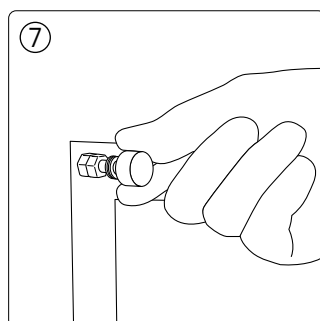


⑤ Depending on the version (Stainless steel, stone or glass), now position the combustion chamber floor/cover on the Effect Burner.

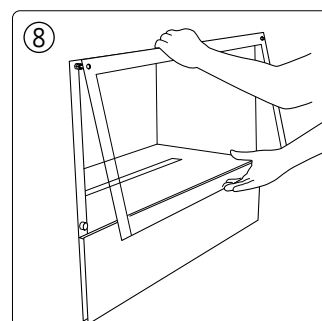


⑥ Close the flap.

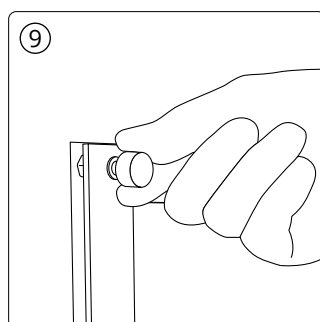
⑦ Unscrew the two upper, round fixing nuts and remove the PVC washer from each.



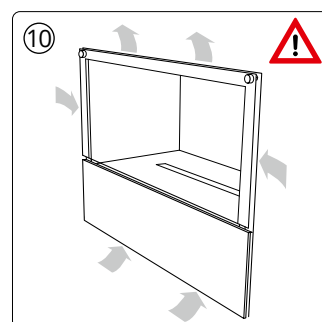
⑧ Position the front screen, with the magnets facing inwards on the screen mounting.



⑨ Position the PVC washers on each side and screw in the round fixing nuts.



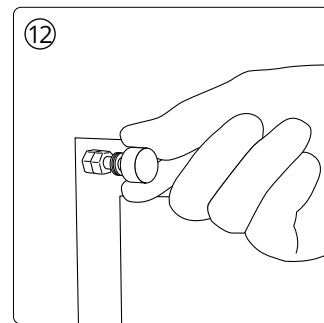
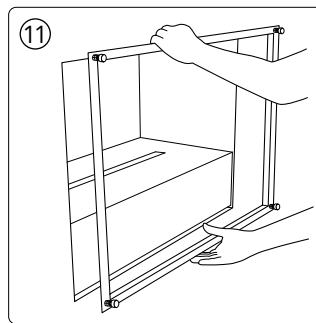
⑩ The passage of air must be guaranteed (sides, top and bottom). Make sure also, that in the case of a subsequently applied wall covering, an adequately wide gap is still provided for the passage of air (at least 3 cm).



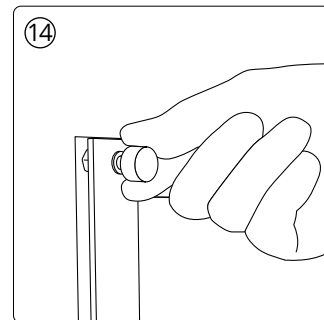
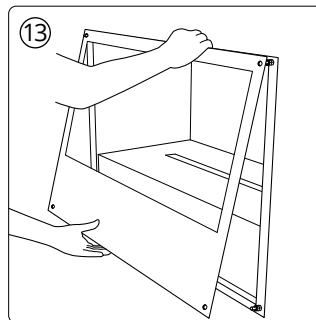
Please pay close attention to the notes!

## Hip Tunnel built-in module

- ⑪ If you are installing a tunnel device, please fit the metal frame to the back of the insert and screw it in tightly.
- ⑫ Unscrew the upper, round fixing nuts and remove the PVC washer from each nut.

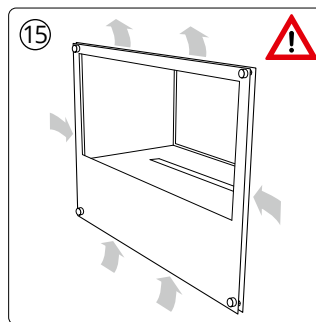


- ⑬ Now fit the screen on the screen mounting frame.
- ⑭ Fit a PVC washer on each fixing nut and screw in the fixing nuts to secure the screen.



- ⑮ The passage of air must be guaranteed (sides, top and bottom). Make sure also, that in the case of a subsequently applied wall covering an adequately wide gap is still provided for the passage of air.



- Nanoscreening with surface protection reduces possible fogging of the effect glazing. Thoroughly clean the glasses or mirrors of the effect fire with a glass cleaner and then apply the "THE FLAME CLEAR" with a soft cloth.

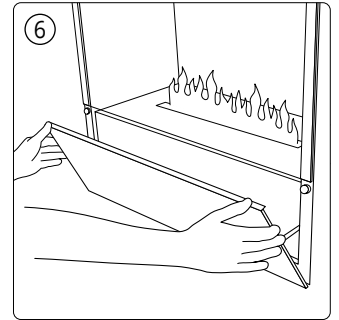
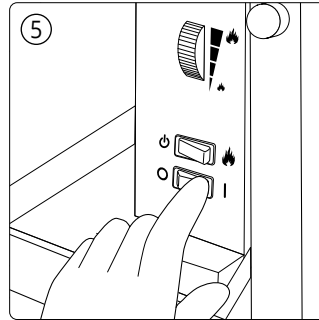
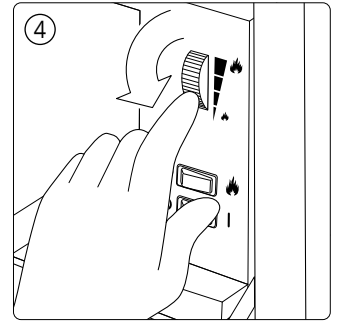
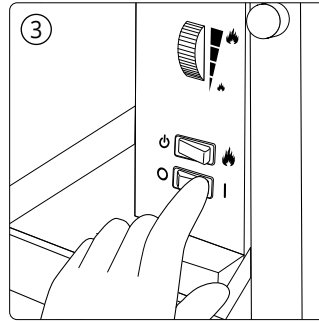
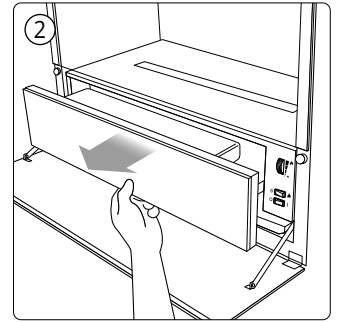
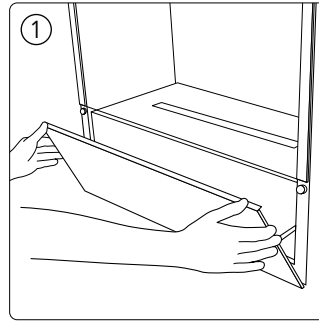



Please pay close attention to the notes!

# Operating Instruction

## Operating manually

- ① Open the flap of the Hip 30/50 built-in module.
- ② Pull out the drawer of the Fire Effect Burner up to the stop, using the handle provided.
- ③ Switch On the main switch  on the Effect Burner.
- ④ For the first commissioning, the burner should run for approx. 30 minutes on the lowest flame (turn the regulation wheel all the way down)!
- ⑤ Start directly on the unit:  
Switch the On-Off switch on the Effect Burner to On .
- ⑥ Close the drawer of the Fire Effect Burner.

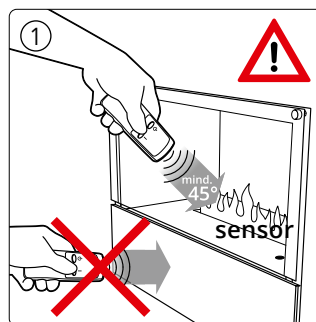


For safe operation "BIO-FLUID" from "THE FLAME"  and distilled water are specified as permissible substances.  
The use of tap water and/or other additives leads quickly to irreparable damage to the membranes and electronic components.

# Start using the remote control

- ① Point the remote control downwards and directly at the Effect Burner (right side, 45 °) and switch off . This is indicated by a signal tone.

As soon as the required water level is reached, the auto start of the lighting commences and after a short warm-up phase of 30 seconds the fog membranes start and the flame effect begins.

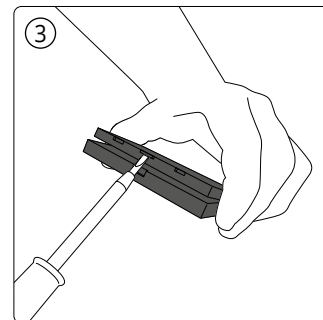
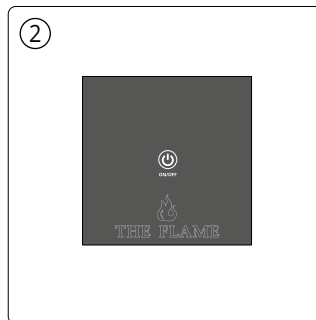


The sensor opening must not be covered by stones or decorative wood.



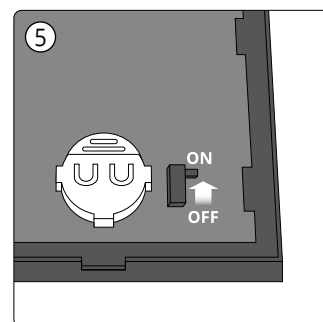
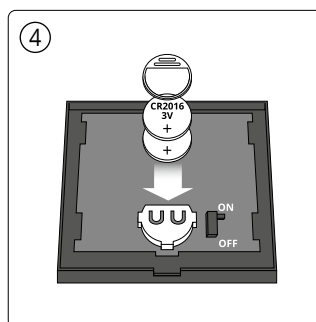
- ② As an option, THE FLAME also offers the radio remote control "TOUCH".

- ③ You must insert the batteries before using the "TOUCH" radio remote control. Open the housing with a slotted screwdriver in the opening provided.



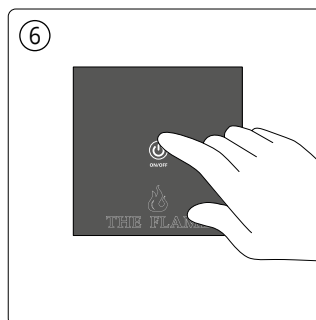
- ④ Now place 2 x CR2016 batteries with holder in the provided battery compartment (batteries may be included).

- ⑤ Set the **ON/OFF** slider to **ON** and close the housing of the radio remote control again.



- ⑥ Press the ON/OFF button . The button lights up. This will be indicated by one beep.

As soon as the required water level is reached, the auto-start of the lighting commences and after a short warm-up phase of 30 seconds the fog membranes start and the flame effect begins.

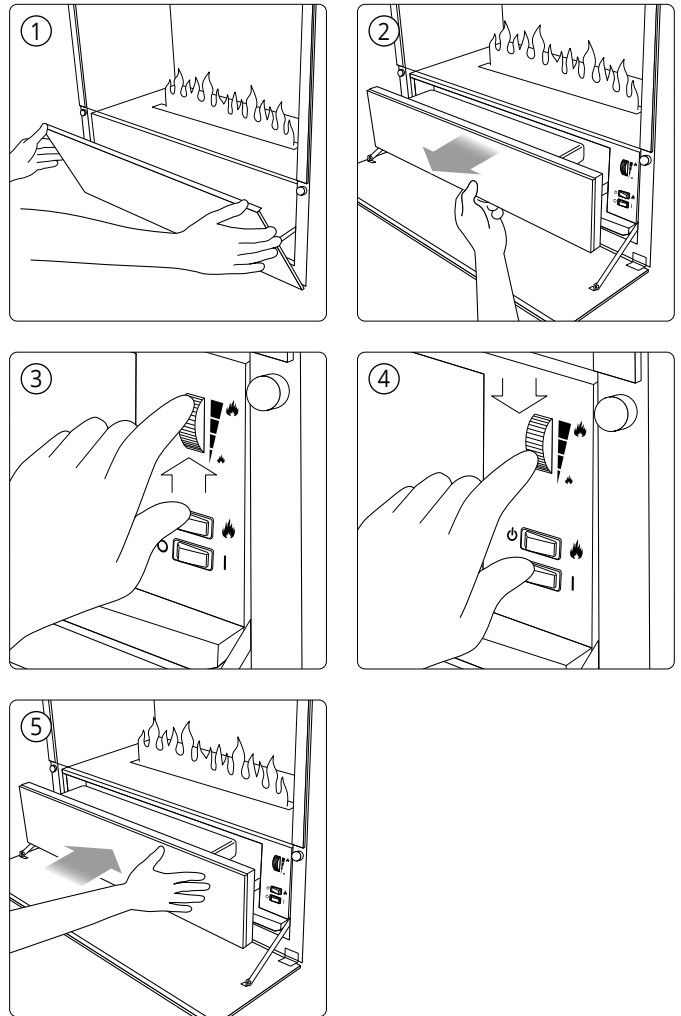


Please pay close attention to the notes!



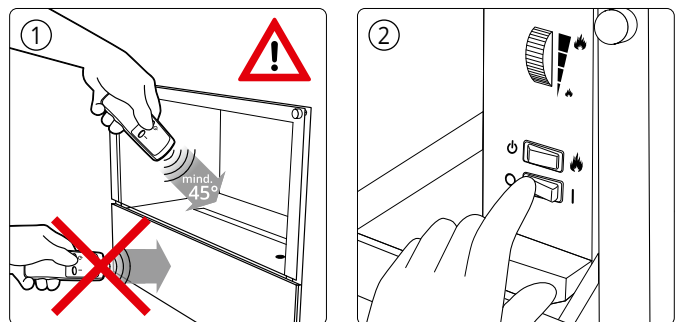
## Regulation of the flame intensity

- ① Open the flap of the Hip 30/50 built-in module.
  - ② Open the drawer of the Effect Burner.
  - ③ Turn the regulator control upwards to 🔥 increase the flame intensity.
  - ④ Turn the regulator control downwards to 🔥 reduce the flame intensity.
  - ⑤ After successful regulation, close the drawer in order to check the setting.
- Close also the flap of the Hip 30/50 built-in module.
  - With the unit closed, depending on the temperature and air humidity in the room and the setting of the flame intensity, the glass pane can be subject to condensation and misting, which with time leads to automatic volatilization. The possibility of condensation can be reduced or prevented by reducing the flame intensity (Fig. 10). In addition the inside of the glass pane should be treated regularly with "THE FLAME Clear" in order to prevent condensation on the glass pane.



## Switching off the Fire Effect

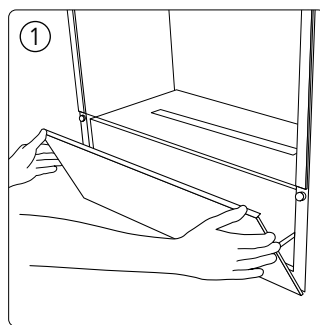
- ① Point the remote control downwards and directly at the Effect Burner (right side, 45°) and switch off 🔌. This is indicated by a signal tone. The switch on the unit itself can also be used for this purpose.
- ② Switch off the main switch directly on the unit (if the unit is not going to be used again for some time).



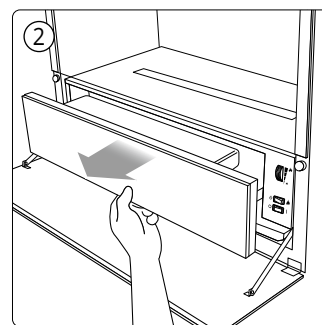
Please pay close attention to the notes!

# Cleaning

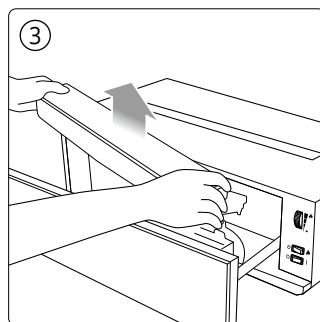
① Open the flap of the Hip 30/50 built-in module and pull out the mains plug.



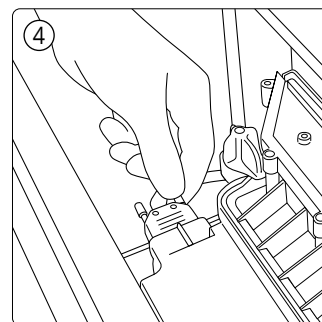
② Open the drawer of the Effect Burner.



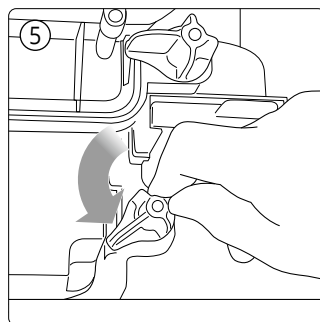
③ Lift the water tank up and out of the unit.



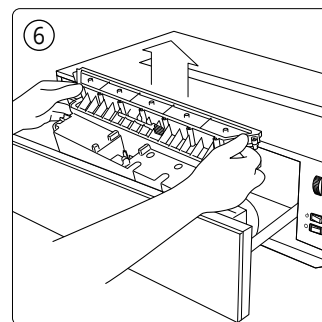
④ Unscrew the power cable on the left side.



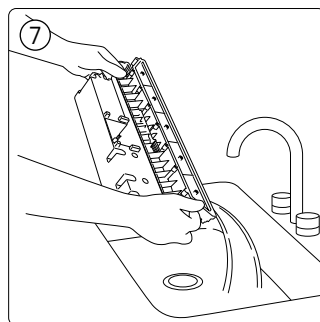
⑤ Release the lower red locking device on both sides.



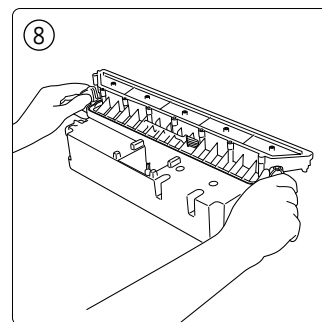
⑥ Remove the sump.



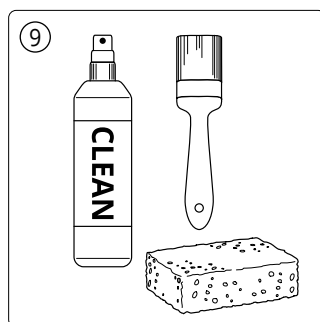
⑦ Empty the remaining water from the sump into a sink.



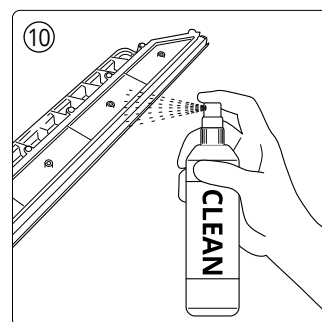
⑧ Please open the upper red lock and lift the lid of the sump.



⑨ For cleaning please use "CLEAN" from THE FLAME a large brush and sponge.

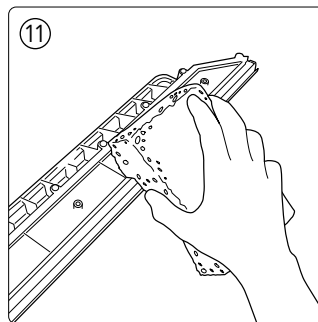


⑩ Spray the lid of the sump with "CLEAN".

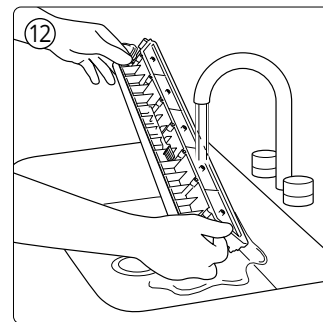


Please pay close attention to the notes!

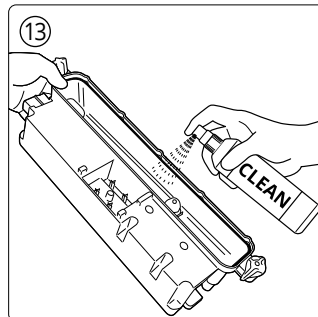
- ⑪ Spread the cleaning agent "CLEAN" with the sponge over the entire irrigator jets of the sump. Clean the irrigator jets particularly thoroughly with the sponge.



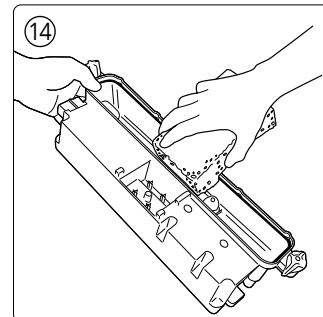
- ⑫ Rinse out the irrigator jets with warm water. Dry the sump with a soft cloth.



- ⑬ Spray the sump with "CLEAN". Spread the cleaning agent over the entire sump with the sponge.



- ⑭ Then clean the sump particularly thoroughly with the sponge.

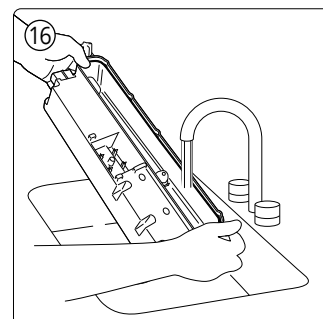
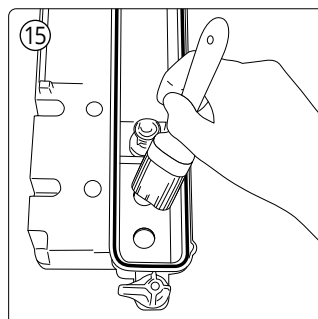


- ⑮ Clean the membranes of the sump.

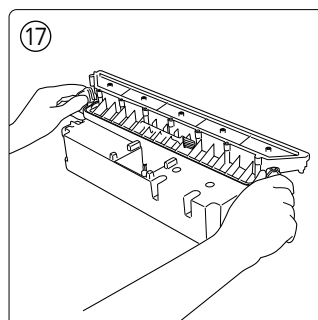
The power cable plug must not become wet!  
Under no circumstances must the power cable be placed in the water bath!



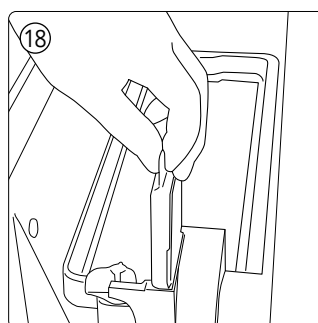
- ⑯ Rinse out the sump with warm water. No atomizing and rinsing/detergent residues must remain! Dry the sump with a soft cloth.



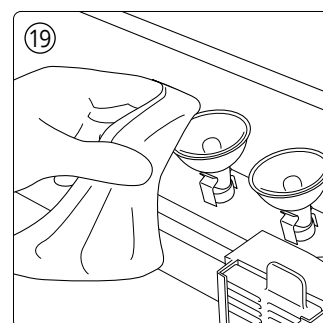
- ⑰ Replace the lid on the sump and secure the upper red locking device on both sides.



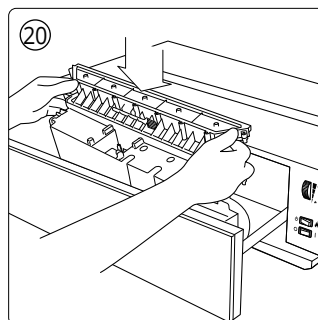
- ⑱ Remove the fan filter, with mounting, and rinse the filter with warm water, dry and replace.



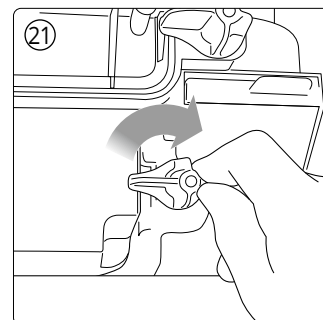
- ⑲ Wipe the lamps over with a damp cloth.



- ⑳ Replace the sump.

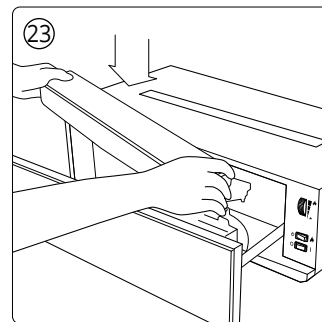
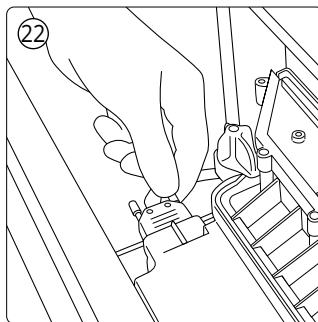


- ㉑ Close the lower red locking device on both sides.



②② Screw the power cable back on the left side.

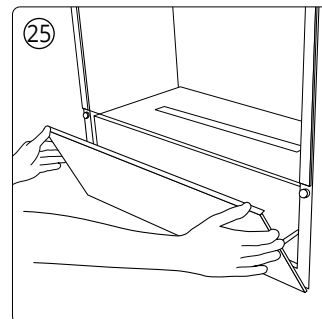
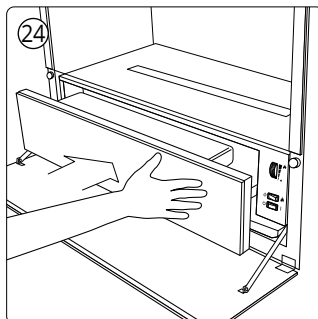
②③ Replace the water tank.



②④ Push in the Effect Burner drawer.

- Reconnect the power supply.

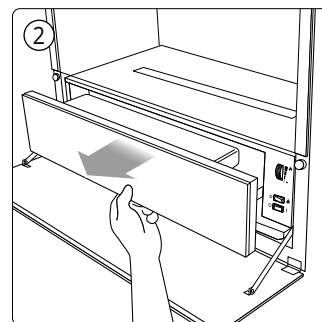
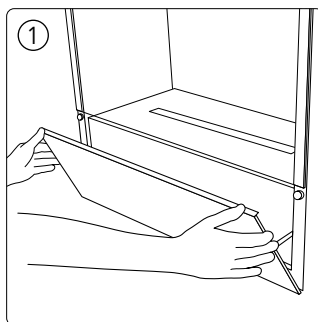
②⑤ Close the flap of the Hip 30/50 built-in module. Your Effect Burner is now ready for use again!



## Cleaning with Fluidmatic operation

① Open the flap of the Hip 30/50 built-in module and pull out the mains plug.

② Open the drawer of the Effect Burner.

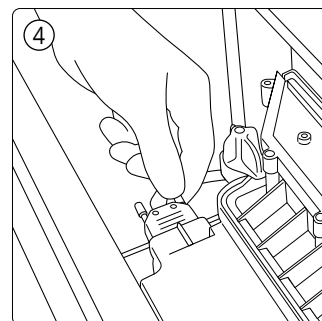
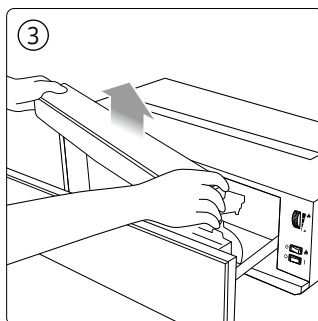


Before cleaning the mains plug must always be removed from the power socket.



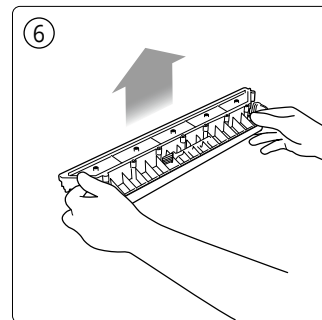
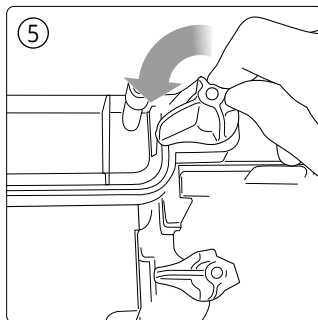
③ Lift the water tank up and out of the unit.

④ Unscrew the power cable on the left side.



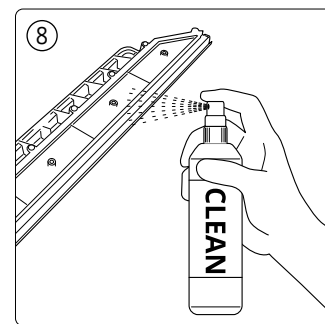
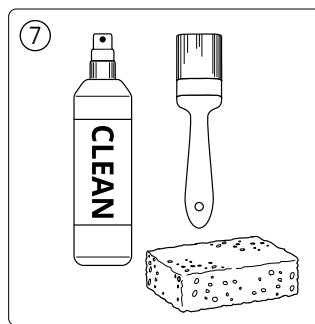
⑤ Please open the upper red lock on both sides.

⑥ Now the plug-on fog-nozzle can be removed from the technical unit (sump).

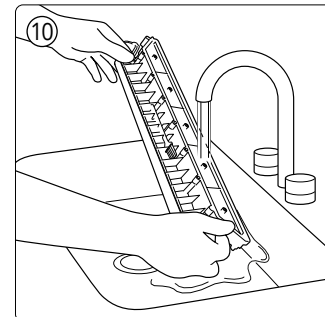
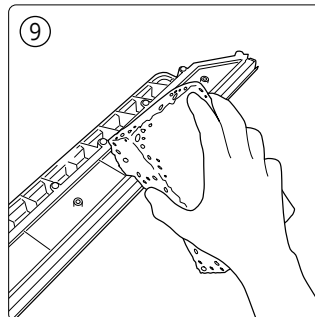


Please pay close attention to the notes!

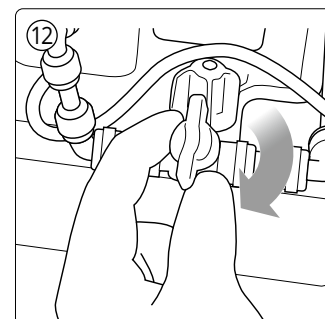
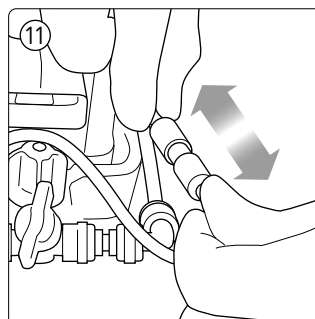
- ⑦ For cleaning please use "CLEAN" from THE FLAME a large brush and sponge.
- ⑧ Vigorously spray the attachment fog-nozzle with "CLEAN" from all sides, also inside and at the top edge.



- ⑨ Cover over the the fog-nozzle with cleaning agent "CLEAN". Use a sponge or a wide brush. Clean the fog-nozzle particularly thoroughly with a sponge or a wide brush. Clean the fog-nozzle with the sponge.
- ⑩ Rinse the fog-nozzle thoroughly with warm water and dry with a soft cloth.

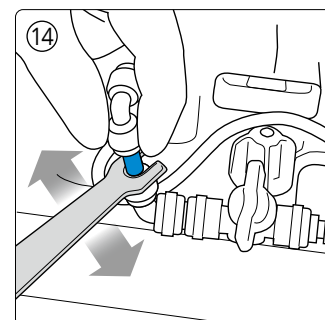
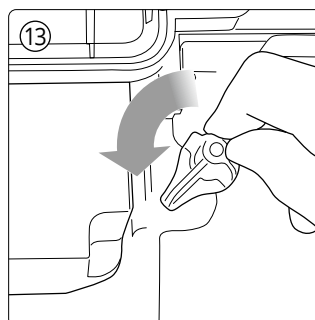


- ⑪ Remove the plug-on fog-nozzle from the sensor cable.
- ⑫ Close the valve of the piping unit inlet by turning clockwise by 90 °.

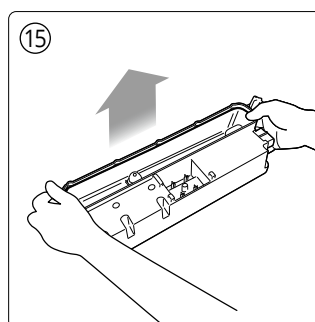


- ⑬ Now turn the two lower, side, red handles (left and right on the sump holder) outside around the sump.
- ⑭ You can use the puller (optional accessory) to remove the sump from the piping unit inlet with pull the safety ring downwards and bring up the sump with the Bio-Fluid line at the same time. The piping unit inlet is now separated from the sump.

The piping unit feed can also be used without a puller from the sump connector by pressing the fuse ring e.g. press down with the fingernail, unlock and pull the sump with the Bio-Fluid line at the same time.

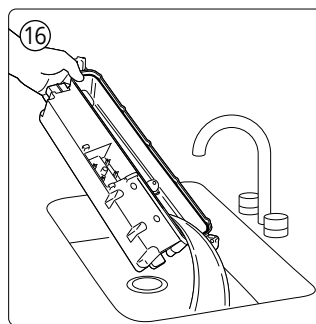


- ⑮ Now the sump can be lifted up from the burner.

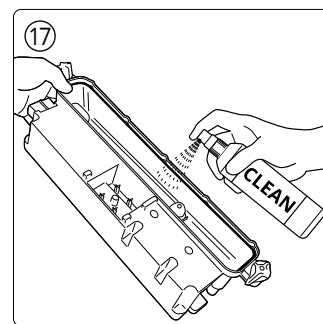


Please pay close attention to the notes!

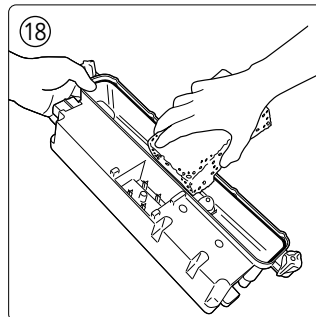
⑩ Drain the remaining water from the sump into a sink.



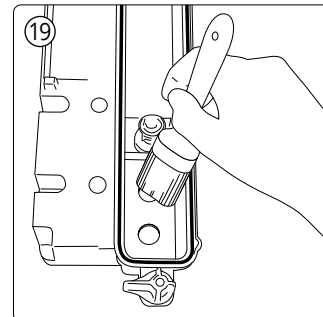
⑪ Spray the inside and top of the sump and the entire sump with "CLEAN". Cover over the complet Sump with the cleaning agent "CLEAN". Use a sponge or a wide brush.




⑫ Clean the sump with a sponge.

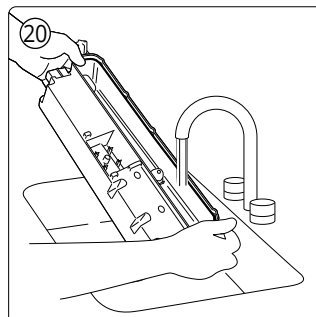


⑬ Clean the ultrasonic membranes with the brush.

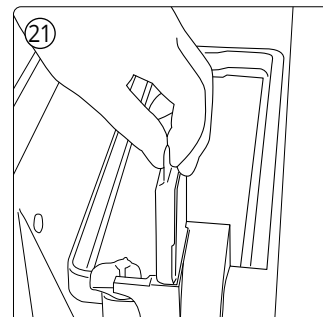


The power cable plug must not become wet! Under no circumstances must the power cable be placed in the water bath! 

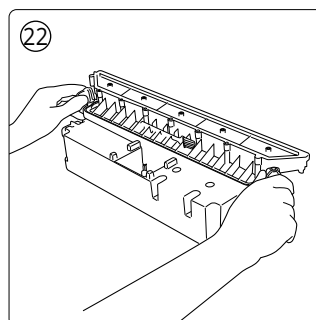
⑭ Rinse out the sump with warm water. No atomizing and rinsing/detergent residues must remain! Dry the sump with a soft cloth.



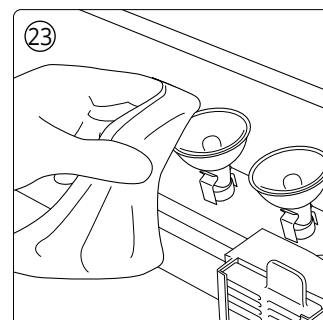
⑮ Remove the fan filter, with mounting, and rinse the filter with warm water, dry and replace.



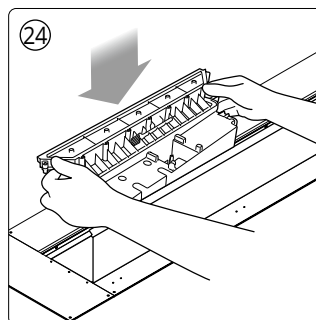
⑯ Replace the plug-on fog-nozzle on the sump and secure the upper red locking device on both sides.



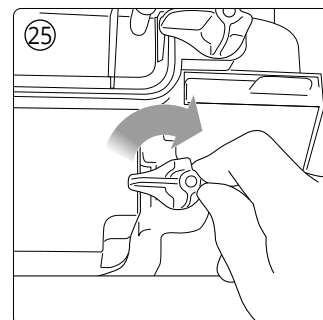
⑰ Wipe the lamps over with a damp cloth.



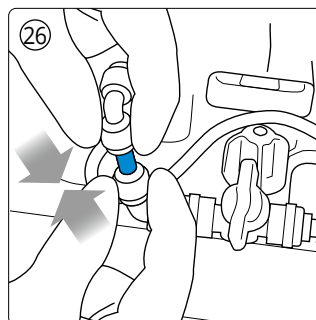
⑱ Replace the sump.



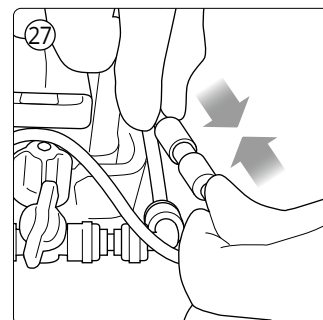
⑲ Close the lower red locking device on both sides.



⑳ The sump can be connected with the water connection. Please pay attention that the tube is inserted up to the mark.



㉑ Plug the Cinch-plug again in the sensor line.

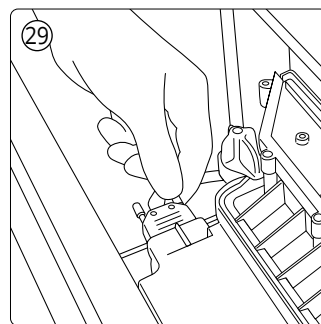
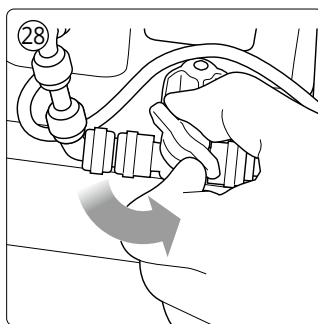


Please pay close attention to the notes!



②8 Open the Bio-Fluid-cable valve with a turn against clock-wise for 90°.

②9 Plug in the plug for the control cable again. Turn the both spin sticks on the plug.

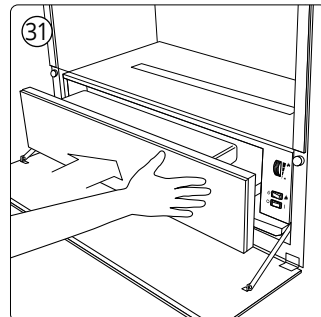
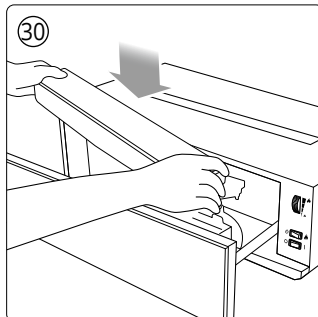


③0 Replace the water tank.

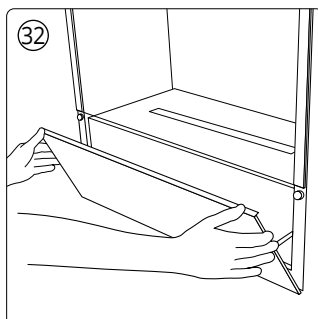
- Reconnect the power supply.

③1 Push in the Effect Burner drawer.

- Reconnect the power supply.



③2 Close the flap of the Hip 30/50 built-in module. Your Effect Burner is now ready for use again!



## Maintenance and cleaning

Before cleaning the fire effect burner the mains plug must always be removed from the power socket. We recommend regular cleaning every 100 hours of operation or after 2 weeks at the latest (clearly, contamination/soiling should always be removed immediately). For general cleaning, always use a soft, clean dust cloth. On no account should abrasives be used. Please use "CLEAN" from THE FLAME for cleaning the sump with irrigator jets. When cleaning off collected dust deposits and fluff, occasionally a vacuum cleaner with a soft brush attachment can be used to clean the outlet grill for the fan. The sump and tank are to be emptied and cleaned when the unit has not been used for more than 10 days. Please refer to the attached Operating Instruction for the Effect Burner.

## Danger and Warning Symbols

- This unit must not be used by children or by disabled persons unattended.



- Spare parts fitted to the unit must be those approved by the manufacturer.

- Do not place flammable objects in or on the unit



- The construction of the unit must not be modified.



- Before using the unit, carefully read through the operating instructions.



- Never cover the unit.

